



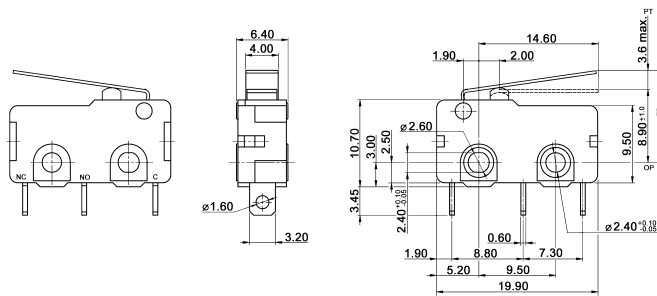
Subminiature Micro / Snap Action Switches

Specifications:

Contact rating:	see ordering code
Contact resistance:	< 100 mΩ
Insulation resistance:	> 100 MΩ
Dielectric strength:	1000 V, 50 Hz for the duration of 1 minute
Operating temperature:	-25 °C to +125 °C
Mechanical life:	minimum 1 000 000 operations
Contacts:	silver-alloy, gold-plating on request
Terminals:	brass, silver-plated
Case:	PBT (UL 94 V-0), Phenolic resin on request
Mounting:	on pc-board, on panel
Timing:	non-shorting
Soldering conditions:	auto-soldering – max. 5 sec, max. 260 °C manual soldering – max. 3 sec, max. 350 °C

Models: Switching function

DM-SMG 5 L01S100 on – mom



Lever	Operation force [gf]					Operation position [mm]
	50	100	150	250	350	
00	50	100	150	250	350	8.5 ± 0.3
01	–	40	50	80	110	8.9 ± 1.0
02	–	35	45	75	100	8.9 ± 1.2
03	–	25	35	55	–	8.9 ± 1.8
04	–	15	30	45	–	8.9 ± 2.0
05	–	35	45	75	100	12.2 ± 1.5
06	–	40	50	80	110	14.6 ± 1.0
07	–	40	50	80	110	10.8 ± 1.2

Ordering code:

DM-SMG -L

Rating:

- 01 0.1 A / 250 V AC, 48 V DC
- 5 5 A / 250 V AC, 30 V DC
- 10 10 A / 250 V AC

Lever: (see following pages)

Terminals:

Operating force:

- 50 15 gf
- 100 100 gf
- 150 150 gf
- 250 250 gf
- 350 350 gf

Notes: Operation force is nominal value for pin plunger (lever code 00).
Not all operation forces are available for all ratings.

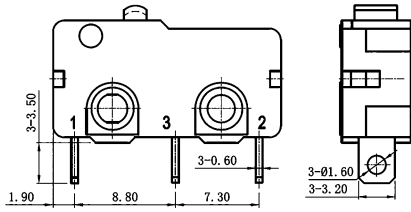
UL recognized components on request.

Subminiature Micro / Snap Action Switches

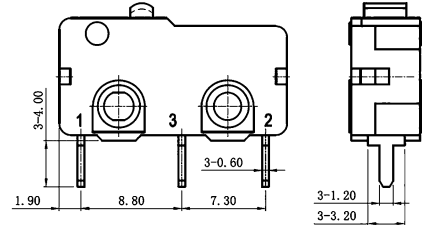


DM-SMG Terminals:

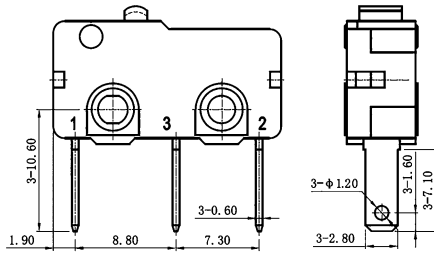
Terminal S



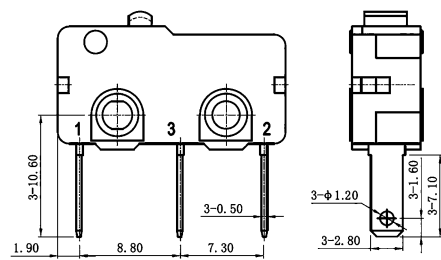
Terminal P



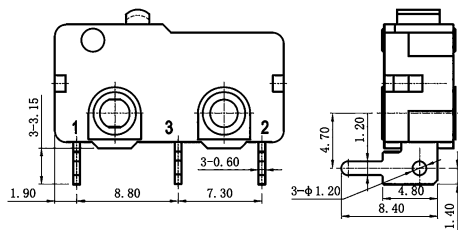
Terminal D



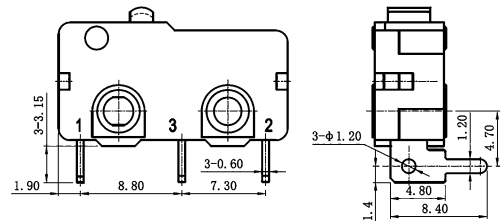
Terminal E



Terminal L



Terminal R

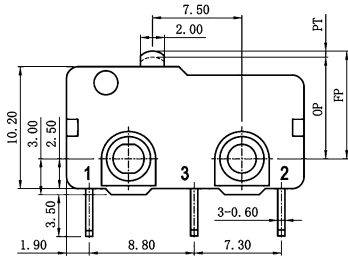




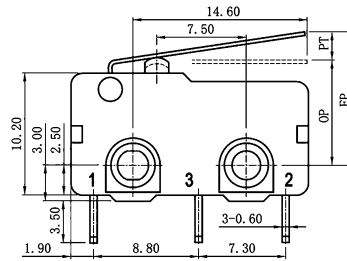
Subminiature Micro / Snap Action Switches

DM-SMG Lever:

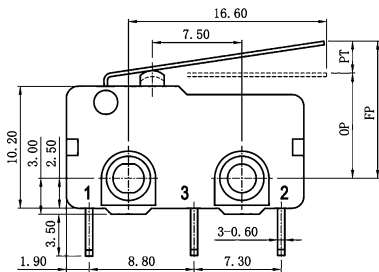
Lever 00



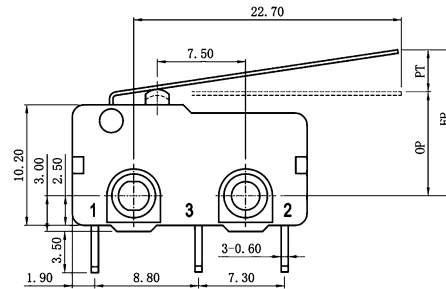
Lever 01



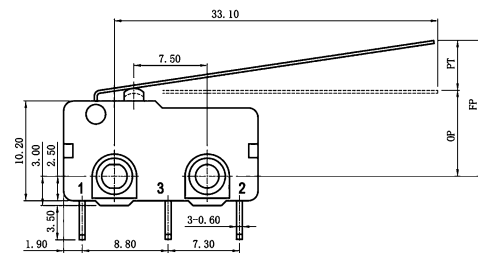
Lever 02



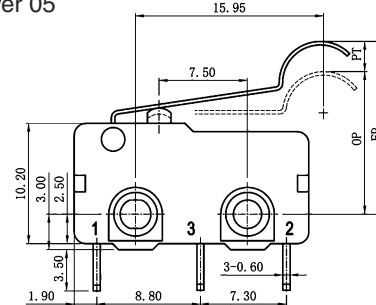
Lever 03



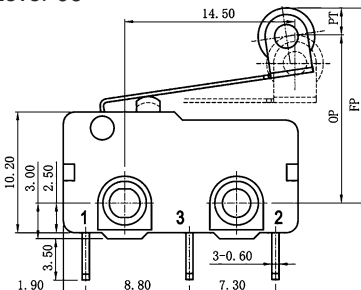
Lever 04



Lever 05



Lever 06



Lever 07

